



Volume 30, Issue 30

A Non-Profit 501(c)(4) Organization
Incorporated August 31, 1971

September 2003 Newsletter

Upcoming General Membership Meetings Monday, September 15, 2003:

Mike Kuhn, executive chair of the Rancho Simi Trail Blazers (RSTB) and Simi Valley City Planner, will talk on the history, archeology and geology of the Simi Valley. He will give some insights relating to place names. If you subscribe to RSTB, you will know by reading Mike's dependably fascinating articles that he has a wealth of knowledge of our area.

Monday, October 20, 2003:

John F. Romani, archeologist with Compass Rose, will present an hour-long program with slides of cave and rock art at the former-Rocketdyne/current-Boeing site.

SMPA General Membership Program meetings take place every 3rd Monday of the months during the months of September through November and January through May. Program meetings begin at 7:15 p.m. and generally conclude by 9:00 p.m. The venue is the Rockpointe Clubhouse, 22300 Devonshire, Chatsworth, on the south side, 1 block before entering Chatsworth Park South. Refreshments are served at program meetings.

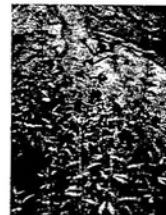
Members are invited to attend Board of Directors meetings, which take place at the Chatsworth Park South Visitors Center at 7 p.m. each first Monday of the month. For more information call (818) 702-0854. ♠

RALLY DAY

FOR THE SANTA SUSANA PASS STATE HISTORIC PARK

Saturday, September 20, 2003 - 10:30 a.m. to 12:00 noon
Chatsworth Park South Recreation Center
22360 Devonshire Street, west of Topanga Canyon Blvd.

The Park needs funding for rangers, exhibits, trail maintenance, and a visitor center, as well as for nearby land acquisitions. We need to show local elected officials we care! Come learn more, and meet our elected officials and others who can improve the future for our Park and our children.



History, Trails,
Wildflowers,
Scenic Vistas
Hidden in the
Northwest Corner
of Chatsworth

Join Us For Rally Day-Santa Susana Pass State Historic Park, Chatsworth

Rally Day is jointly sponsored by the Santa Susana Mountain Park Association, the Foundation for the Preservation of the Santa Susana Mountains, the Chatsworth Historical Society, and the Chatsworth Women's Club.

Rally Information: 818.998.3343; <http://www.chatsworthchamber.com> - Local News

Santa Susana Mountains Task Force (SSMTF)

The Santa Susana Mountains Task Force (SSMTF) of the Sierra Club needs a Sierra Club member to arrange and write up hikes for the Santa Susana Mountains and the Simi Hills. The SSMTF seeks nominations for chair, vice chair, outings chair and conservation chair. At our next meeting, which will occur in October, we will select task force positions and set a date for leader training. Any Sierra Club member can become a member of the Task Force and will receive a one-year subscription to the SSMPA newsletter. Anyone interested should call Judy Garris at (818) 346-7654.

The SSMTF supports the protection of the Santa Susana Mountains and Simi Hills as the primary wildlife corridor linking the Angeles and the Los Padres National Forests to the Santa Monica Mountains. This narrow corridor and its choke point at the 118 freeway are important for genetic mixing of wildlife species as they are pushed from the source, the northern national forests into the receiver, the Santa Monica Mountains. Task Force members work to preserve this unique land by attending public hearings and submitting written comments. We believe it is extremely important to preserve our rapidly disappearing natural open spaces not only for wildlife but also for future human generations to experience, respect and enjoy.

News from the CHS

The Chatsworth Historical Society is gearing up for two upcoming and exciting events. The organization's annual membership roundup and barbecue will take place Sunday, September 14 from 4:00 to 6:00 p.m. at the Homestead Acre in Chatsworth Park South. Admission is free to all CHS members, guests and potential members. You are invited to come (bring a side dish) and enjoy the food and entertainment and learn about the advantages of CHS membership.

Also, plans are underway for the CHS Annual Pioneer Day at the Homestead Acre on Sunday, October 5th. In addition to the famous chili cook-off, there will be the regular attractions of demonstrations of pioneer life, petting zoo, gold panning, crafts and music. There is a rumor of a pie-eating contest! Huell Howser will be giving a plug for this event on his September 30th show, so they anticipate a larger crowd than previous years. If you would like to donate something for the white elephant sale or baked goods, call Bea Berman, Chairman, at (818) 341-5449.

Chatsworth Neighborhood Council (CNC) Election

The first CNC election will happen on Saturday, 9/20, from 10:00 a.m. to 4:00 p.m. in the meeting room at the north end of the Chatsworth train depot (a.k.a. the Chatsworth/Porter Ranch Chamber of Commerce office). You may vote in the election if you live, work, own real property or board a horse in the CNC area and are at least 18 years of age. The boundaries of the CNC area are

Corbin Avenue on the east, Nordhoff Street on the south, the city line on the west and the 118 Fwy. on the north, plus the area north of the 118 Fwy. west of Browns Canyon Road to the city line.

CNC's elected Board can bring the weight of community opinion to commission hearings and departmental proposals on both local and citywide matters. It will get early notification of important matters and will receive [LA] city funds to apply here in Chatsworth.

Visit the CNC website at chatsworthcouncil.org or call (818) 773-9655 for more information.



photo by Dali Shafer

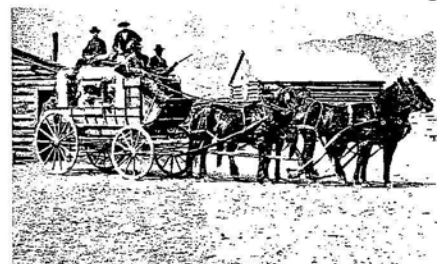
Chatsworth Raccoons

Excerpt from article entitled "The Day The Stagecoaches Stopped Running"

by Doris Murphy

In 1887 Senator Thomas R. Bard purchased most of the San Fernando Valley floor as an investment from Thomas A. Scott who had purchased it earlier hoping to find oil. Since little oil was found, Sen. Bard rented his land to early settlers for many years. It was used primarily for sheep and cattle grazing. Some years later, Bard sold 96,000 acres of this land to the Simi Land and Water Co. for \$550,000 (in greenbacks stacked a foot high and tied with string). Bard owned the majority of the stock in the new company. Soon Bard built a 26-room hotel on a knoll just northeast of what is now Santa Susana ... with only one bathroom!

By this time the rail line ran through San Fernando but the old stage road was still the only route to Simi over the Santa Susana Mountains. Larry's Stage Station, which was located in an area east of what is now Hopetown, continued, as it had in the past, to be a friendly place to rest, obtain some refreshments, and perhaps change horses. Bandits found the Santa Susana Pass area ideal for ambushing stages and as hideouts amid the numerous caves and canyons. Vasquez, the notorious bandit, is known to have stopped at Larry's place to obtain a bit of refreshment and relaxation with his gang.



September hikes



Sierra Club Hikes:

Thursday 9/18 & 9/25: Moderate, 6-8 mi. Meet at 7:30 a.m. at top of Reseda Blvd. Leaders: Michelle Campbell, Ramona Dunn, Bob Galletly, Nancy Krupa, Ants & Virve Leps, Joanne Proffit, Ron Rosien, Vera Salomons, Tom Siebert & Margaret Vernallis. Call Ramona at (818) 783-8318 for more info.

All participants on Sierra Club outings are required to sign a standard liability waiver. If you wish to read the liability waiver before you chose to participate on an outing, go to: <http://www.sierraclub.org/outings/chapter/forms/>, or contact Outings Dept. at (415) 977-5528 for a printed version.

Santa Monica Mountains Conservancy Hikes:

Sunday, 9/28: 3:30 to 6:00 p.m. - Sage Ranch: Come out and enjoy the late blooming flowers of summer. Easy to moderate hike (3 mi. RT / 500 ft. gain/loss). Take Roscoe Blvd. W to Valley Cir. Blvd., R 1 mi to Woolsey Cyn Rd, L to end of Woolsey, R 1/4 mi on Black Cyn Rd. Meet in parking area.

Rancho Simi Trail Blazers Hikes:

Every Thursday - Chumash Trail: Moderate paced 5 mi , approximately 1000¹ gain. Meet at 6 pm at Chumash trailhead. Directions: take 118 to Yosemite exit. Go north on Yosemite, turn right on Flanagan Dr. Trailhead is at the end of Flanagan Dr.

Every Sunday - Rocky Peak Trail: Strenuous, 5 mi , approx. 1000' gain. Meet at 5 pm at trailhead. Directions: Take 118 Fwy to Rocky Peak exit. Trailhead is north of 118 Fwy.

(For more information on hikes contact the Rancho Simi Recreation and Park District at 805-584-4400.)

Hikers need water, sunscreen, socks, lugsoles, hat and snack or lunch.

Thank you for renewing! Willis & Melba Simms, Margaret Vernallis, Jack & Barbara Levin, de Sosa Family, Janet Appel, Jeannette & Eugene Davis, Carla Henry, Dali Shafer, George Banks, Bob Galletly, Barbara & Michael Haas, Lizzie Novotny & Family, Ants & Virve Leps, Jim & Leona Wolff and Charlene Vincent.
New Life Members: Diane & David Schwartz.



Santa Susana Mountain Park Association

invites you to JOIN / RENEW (circle one).

Investing in the future of our communities and its resources is probably one of the best expenditures of our time and efforts. Return this cutoff with your contribution lend your support. Make your check payable to SSMPA and send to SSMPA, P.O. Box 4831, Chatsworth, CA 91313-4831.

- Senior or Student (\$5.00) Individual (\$10.00) Family (\$15.00)
 Life Member (\$100.00) Business / Organization (\$25.00)

Name: _____ Phone: _____

Street Address: _____ E-mail: _____

City / State / Zip: _____

Special Interest / Expertise: _____

The purposes of the Santa Susana Mountain Park Association are the protection, preservation, restoration, and enhancement of the Santa Susana Mountains and Simi Hills as open space lands and wildlife corridors linking the Los Padres National Forest and San Gabriel Mountains, including the Angeles National Forest, to the Santa Monica Mountains; as habitats for plants and animals native to the Santa Susana Mountains and the Simi Hills; as locales of unique geologic formations; as sites of ethnological, archaeological and historical interests; to provide passive recreational opportunities and environmental education opportunities; and, to support the acquisition of new public parks, open space and conservation easements, the expansion of existing parks, participate in the planning of park infrastructure and programs, and support said programs. To find out how you can participate, contact Jan Miller at (818) 702-0854.

New Resource for SSMPA Members and Friends

We have set up a "yahoo group" internet site where we have posted a host of resources (documents and photos and links) of potential interest to SSMPA's members. These include resources relating to the appreciation and conservation of our local natural environment and to the challenges posed by land developers. We have also posted an archive of newsletters and materials relating to the history of SSMPA.

We recently added many of your email addresses to the group's email list. (You will have received a notice.) If you'd like to be included on the group's email list, please send your address to SSMPA@hotmail.com. You'll need to "join" and become a full member of the Yahoo group before you can access the site's resources. If you have not yet joined, please point your browser to this address: <http://groups.yahoo.com/group/SSMPA/join>

If you have any questions, please send an email to SSMPA@hotmail.com and we'll try to provide assistance.

P.S. Too busy lately to take yourself to Devil Canyon? Well, check out new photos of it on the above site!

Please note the renewal date on your label and send in your dues if you wish to continue your SSMPA membership and receive the newsletter. If you are current with your dues, kindly disregard this notice. Life Members, we thank you and invite your continued support with periodic donations to help meet production costs.



Santa Susana Mountain Park Association &
Foundation for the Preservation of the Santa Susana Mountains
P.O. Box 4831
Chatsworth, CA 91313-4831

ADDRESS SERVICE REQUESTED

Non-Profit
US Postage
Paid
Van Nuys, CA
Permit No. 761

LIFE Member
Nancy Razanski
22149 James Alan Circle
Chatsworth CA 91311-2051